



Advantages of the retractable pergola

- 1 Adaptable and 100% customizable.
- 2 Practical and functional design.
- 3 Guaranteed comfort.
- 4 Maximum protection against adverse weather.



- 5 Ground-breaking and innovative finishing.
- 6 Regulates light and temperature easily and ecologically.
- 7 Functional optional components: lighting, motors, etc.
- 8 Ideal for the hospitality sector.



- 9 Fits perfectly in sunny environments.
- 10 Resistant thanks to its aluminium structure.
- 11 They improve the aesthetics of the terrace, porch or environment where they are installed.
- 12 Compatible with glazing systems and other solar protection systems.



MADE IN SPAIN



C3 Systems, S.L. · Marie Curie, 23-25 · Elche Parque Empresarial · 03203 Elche (Alicante) Spain · Telf. +34 966 286 186
c3systems@c3systems.es · www.c3systems.es



ED. 1 - 2021

This document responds to a mere function of commercial promotion; it does not constitute a genuine advertising offer in the "strict" sense. In order to form the appropriate contract, please contact C3 Systems, S.L. in order to offer you concrete and personalized information, containing objective data, referring to relevant characteristics, and which, it can be understood, will constitute an offer in the "strict" sense.
C3 Systems, S.L. hereby undertakes not to make misleading advertising. For these purposes, therefore, formal or numerical errors that may be found throughout the content of this document will not be considered as misleading advertising; in particular, regarding the accompanying images, which are illustrative and not contractual. In any case, C3 Systems, S.L. undertakes to correct it as soon as it becomes aware of such errors.



Create new spaces
with unlimited views...



Retractable pergola seesky bio-open

The retractable pergola **Seesky bio-open** is a system with orientable and folding slats, allowing an intelligent solar protection and the regulation of the temperature in a natural way, protecting at the same time from adverse weather.

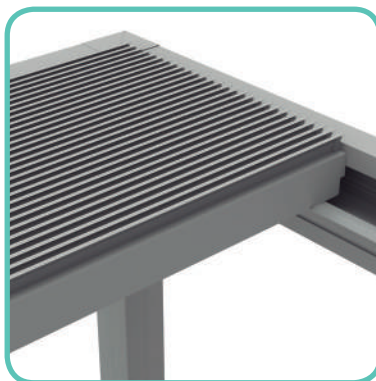
With an elegant design, the retractable pergola allows its adjustable slats to be retracted taking up very little space. Its aluminium profiles are very robust and large in size, offering high resistance. Its aesthetics and its hidden wiring represent a minimalist and differentiating design.

Seesky bio-open offers many functionalities and possibilities in the installation. From intelligent watertightness and rainwater channelling to automated home automation so you don't have to worry about anything.

Technical details

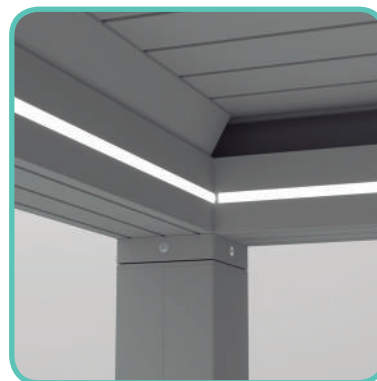
seesky **bio**
OPEN

TECHNICAL DETAILS



Folding slats

Open, close and fold the slats as you please thanks to this dynamic structure and enjoy your stay at all time.



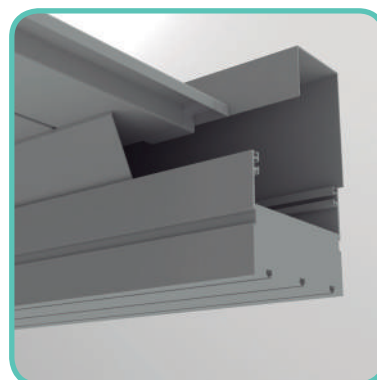
Perimetral LED lights

Enjoy the option of having perimetral LED lights for an extra touch of quality. The lights are fully dimmable to allow you to control their intensity.



Free drainage

The free drainage system drains rainwater out of the pergola through the posts.



Integrated gutter in the beams

The pergola comes with a modern integrated gutter system in the beams that prevents rainwater from splashing on the inside.

TESTS AND CERTIFICATIONS

Seesky bio-open has all the necessary certificates issued by official corresponding agencies.

WIND Resistance



Wind loads
CLASS 6 - UNE-EN 1932:2013
UNE-EN 13561:2009

WATER-TIGHTNESS



Watertightness
CLASS 2 - UNE-EN 1933:2000
UNE-EN 13561:2009



Available standard finishes:

- RAL 9010
- RAL 1013
- RAL 8017



Available in other RAL colors, TEXTURED, ANODIZED AND WOOD IMITATION OPTION NOT AVAILABLE.

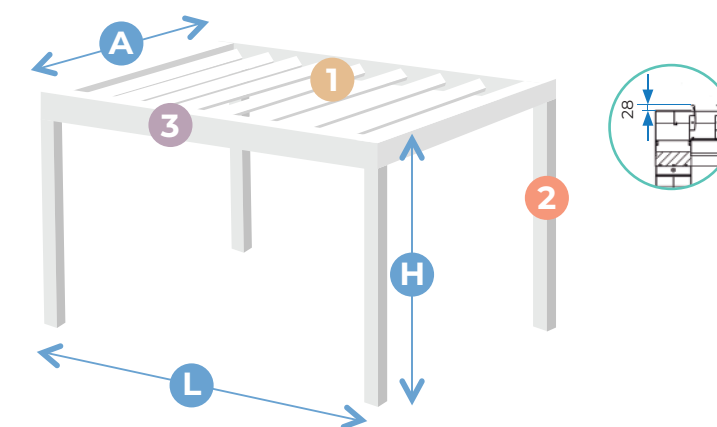
* Check warrenty conditions.
(For checking warrenty details, please access general sales conditions, available in distributor area on the website).

** Installation not recommendable in places where 100% watertightness is recommended, as it is possible due to harsh meteorology conditions (rain with strong winds, hail, condensation, etc...) pipeline system obstruction, improper sealing, or other agents, could cause water entrance. C3 Systems will not held responsible for possible water entrance, damaged caused on goods and people.

Possible configurations

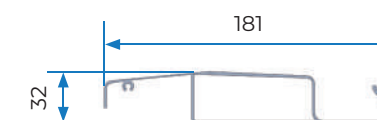
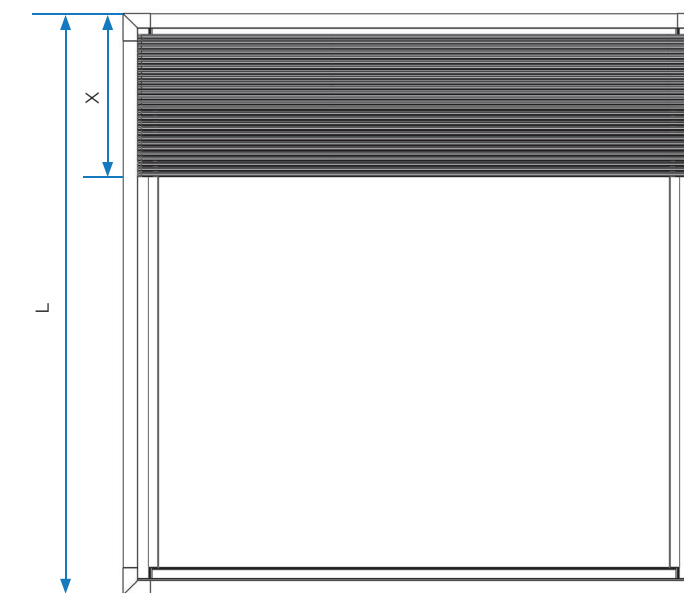
seesky **bio**
OPEN

TECHNICAL SPECIFICATIONS

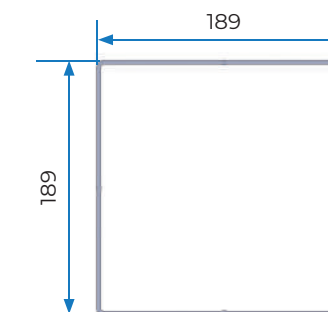


SEESKY BIO-OPEN		
STD	WITH INTERMEDIATE POST	
L Max. Lenght		
5040 mm.	6000 mm.	
A Max. Width		
1 Module 4000 mm.	2 Modules 8000 mm.	3 Modules 10500 mm.
H Max. Height		
2592 mm. (recommended height)		

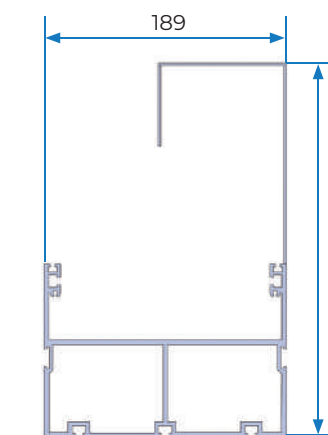
SLATS FOLDING CHART (mm)	
WAY OUT (L)	PACKING (X)
1040	368
1200	410
1360	452
1520	494
1680	536
1840	578
2000	620
2160	662
2320	704
2480	746
2640	788
2800	830
2960	872
3120	914
3280	956
3440	998
3600	1040
3760	1082
3920	1124
4080	1166
4240	1208
4400	1250
4560	1292
4720	1334
4880	1376
5040	1418
5200	1460
5360	1502
5520	1544
5680	1586
5840	1628
6000	1670



1 SLAT



2 PILLAR



3 BEAM